



Report of the Director of Children Services

South (Inner) Area Committee

Date: 10th February 2010

Subject: Youth Services in Inner South Leeds

Electoral Wards affected:

City & Hunslet
Beeston & Holbeck
Middleton Park

Specific implications for:

Ethnic minorities

Women

Disabled people

Narrowing the gap

Council
function

Delegated executive
function available for
call in

Delegated executive
function not available for
Call In. Details set out in
the report

EXECUTIVE SUMMARY

This report provides an overview on the Youth Service in the Children Leeds Directorate, a summary of the current resources and delivery across Inner South area and proposals to ensure the best use of resources to achieve outcomes set out in the Children and Young People's Plan and Inner South Area Delivery Plan.

PURPOSE OF THE REPORT

- 1 The purpose of this report is to:
 - a) provide information on current services/activities for young people delivered and/or commissioned by Youth Services across the Inner South area.
 - b) report April 2009 to January 2010 performance against corporately agreed outcomes/targets for 2009/10.
 - c) provide information and transparency on how ward-based resources are being allocated by youth services to support youth work and commissioned activity
 - d) suggest ways that future services for young people across Inner South can be developed and commissioned to meet priorities identified in the Area Delivery Plan, including potential joint commissioning with Area Committee.

BACKGROUND AND STRATEGIC CONTEXT

- 2 The Integrated Youth Support Service (IYSS) was primarily established as a response to the Government's 10 years strategy "The Youth Matters", Clause 6 of Education and Inspection Act 2006, localisation of Connexion's Service and the agenda of greater integration and partnership working.

- 3 In June 2007, the Executive Board agreed the following key components of IYSS:

- Youth offer (Breeze Youth Promise).
- Youth volunteering initiative.
- Youth work.
- Information, Advice and Guidance Services and Connexions provision.
- Youth participation and engagement.
- Out of school activities.
- Positive activities for young people.
- Breeze card (in conjunction with City Development Directorate).

Responsibility for Targeted Youth Support and Youth Offending Service has been subsequently added to the IYSS remit.

- 4 The Children Act 2004 requires all local authorities to produce a Children and Young People's Plan (CYPP).

- 5 The key strategic priorities from the Leeds CYYP are:

Improving outcomes

- Improving outcomes for looked after children.
- Improving attendance and reducing persistent absence from school.
- Improving early learning and primary outcomes in deprived areas.
- Providing places to go and things to do.
- Raising the proportion of young people in education or work.
- Reducing child poverty.
- Reducing teenage conception.
- Reducing the need for children and young people to be in care.

Working together better

- Strengthening safeguarding.
- Enabling integrated working.

- 6 The Youth Service is contributing towards the achievement of these outcomes by:
- ⇒ Providing opportunities for young people to develop skills through informal learning.
 - ⇒ Supporting young people to make positive choices and find solutions to their problems.
 - ⇒ Working in partnership to make links between the different aspects of young people's lives.
 - ⇒ Encouraging young people to learn positive standards of behaviour.
 - ⇒ Keeping young people safe from physical and mental harm.
 - ⇒ Encouraging young people to be active citizens and to be aware of their rights and responsibilities.
 - ⇒ Sustaining young people's involvement over time.
- 7 The Leeds Youth Work Partnership (LYWP) was established in 2005. LYWP's membership consists of representatives from voluntary youth work organisation providers and officers from the Youth Service as an in-house provider. Increasingly LYWP is providing a mechanism to ensure joint service planning, delivery by a rich variety of providers, a wider view of resources brought to the table by partners, a shared approach to quality assurance, shared accountability for achieving targets, and framework for current and future commissioning of youth work provision.

RESOURCES AND MINIMUM PERFORMANCE TARGETS

- 8 In Leeds, the budget allocated against each ward to deliver youth activities/work is distributed on the basis of 50% according to population and 50% according to social deprivation factors.
- 9 In previous years this has been presented in terms of available youth worker hours, but is now presented in budget terms to improve accountability/transparency and to support the flexibility of options that are available for its use.
- 10 The total amount allocated to the Inner South wards is £596,020. This is broken down into each ward in *Appendix A*.
- 11 The resource is available to use to help deliver outcomes set out in the Children & Young People's Plan and local priorities expressed through the Area Delivery Plan.
- 12 For 2009/10 the allocations come with minimum performance/delivery targets which are set corporately. Details for each ward with the performance targets to the end of quarter 4 and actuals as of January are provided in *Appendix B*.

CURRENT YOUTH SERVICES WORK IN INNER SOUTH

- 13 The current programmes and details of work delivered by the Inner South Youth Service Team are provided in *Appendix C*. The area programme is split by ward to help demonstrate what is being delivered locally.

- 14 There have been a number of staffing changes within the Inner South area over the last few months. This includes the Senior Youth Workers and Youth Work Manager for the Inner South area. The changes have strengthened the capacity of the service to help ensure continued improvements in delivering youth work programmes in the area. The details of these changes have been discussed with elected members in separate ward member meetings.
- 15 The youth work programmes in the Inner South area have continued to reach good numbers of young people and achieve success in positive participation in organised activity. An analysis of the numbers provided in Appendix B shows that the service is above the agreed reached and participation targets for April 2009 to January 2010. It is anticipated that the benefits of the new activities and young people reached will develop into recorded outcomes and accreditation later in the year.

Good progress is being made in developing the service/team and delivering more relevant and targeted local activity.

- 16 In the Middleton Park ward feedback from local young people is very positive. A particular success has been the development of the South Youth Hub building work that started in November. A photo-shoot was carried out involving ward members and young people from the participation group. The setting up of the Hub project board that is inclusive and continuing to make progress towards ensuring a partnership approach to future developments at the Hub. There are joint activities and working with local high schools. Thirteen new sessions have been added to the ward programme this year.
- 17 In Holbeck improvements have been made in the number of local sessions delivered – up by eight this year. The Youth Service has already begun to explore how best youth work can be delivered at Beeston Old Library and Holbeck Youth Centre with support from area committee. Further clarity will help progress youth work in the area with Health for All, St Luke's project in particular the mobile van e.g. target age range, target groups and neighbourhoods, coordination of wellbeing funds towards young people's activities in the ward taking into account the wellbeing funds relating to CYPP and ADP outcomes.
- 18 In City and Hunslet ward there have been twelve new local sessions offered this year. In addition, management support is being provided to local voluntary sector organisations to develop their capacity to deliver activities for young people and help bring in further resources to the area. This includes clarification about what is youth work and the roles and responsibilities of the organisations – covering such issues as the importance of financial management/planning, safeguarding/child protection policies and proper rental/lease agreements for premises and facilities.
- 19 A common feedback from all three wards is that lessons need to be learnt from the recent summer holiday programme of activity. It is felt that young people numbers could have been greater if there had been better coordination between agencies/organisations to avoid duplication and being smarter about the days/times activities were provided. This will be picked up through the South Leeds Youth-work Partnership and Extended Services clusters for next year and included in the local joint commissioning process.

- 20 At a strategic level, the Youth Service has become more involved with the Divisional Community Safety Partnership. The service has contributed to preventative work particularly by involving difficult to engage young people on specific programmes linked to the Stay Safe Operations work. Starting in September 2009 is a new "Revizit" activity, which seeks to address young people's behaviour. Youth work programmes have also been delivered to contribute towards tackling health inequalities.

FUTURE DEVELOPMENTS – INCLUDING COMMISSIONING

- 21 The Integrated Youth Support Service has set up a Leeds Youth Work Partnership (LYWP) with the voluntary sector and set up a commissioning review. The outcomes of the youth work review will then be used to inform proposals for youth work commissioning.
- 22 LYWP is currently undertaking that review to clarify the elements that need to be in place to ensure the proper delivery of youth work; this includes representation at wedge level, registration of organisations and policies on safeguarding which will be part of any contractual agreements within future commissioning processes.
- 23 All funded activity in the area must help contribute towards achieving outcomes set out in paragraph 5 which relate to the CYYP. The Area Delivery Plan will identify Area Committee priorities from this list of outcomes. This clearly links with the CYYP outcome of "providing places to go and things to do". In this case, an opportunity would clearly exist for youth work commissioned via IYSS and via area committees to be complimented.

It is suggested that the current mobile youth provision funded through wellbeing Funds and delivered by St Lukes is evaluated to ensure it effectiveness

- 24 The proposals for joint-commissioning in Inner South will include how the South Leeds Youthwork Partnership is used as the prime mechanism to engage with registered organisations and to ensure there is no duplication of activities/target groups. Consideration will also need to be given as to the role of Extended Services clusters and opportunities to link to the Activities Fund. These mechanisms will consider how support is given to smaller organisations in the area, to deliver specifically targeted pieces of work; for example – arts and crafts, holiday programmes and work with young people to tackle anti-social behaviour.
- 25 The Youth Services team already have ideas for next year that they would like to explore and include in proposals for spend in 2010/11. An early view from Area Committee would be helpful. These are:
- School Holiday work/programmes for 2010/11 delivered by youth services
 - Engaging with a national charity such as LEAP that has expertise in confronting conflict. LEAP is considering potential involvement in cohesion and conflict resolution work within the Leeds area.
 - The Youth Service is working with a group of young people on a participation model for the South Youth Hub. This group will be working towards becoming a South Area group. The Area Committee could enhance this initiative by helping to facilitate and meet with this group in the near future to consult on youth work provision and activities for young people in the whole of South area.

- Healthy Young People's projects in high schools. To deliver sessions on health & wellbeing, sexual health, relationships, information on contraception, personal health & hygiene. This work to be delivered in partnership with NHS school based staff. There is an example of this working successfully in the South Leeds Academy.
- Additional, targeted work with Voluntary Sector Organisations to build capacity in establishing Child Protection, Equality Policies, Curriculum, Quality Assurance, Financial Management and Reporting mechanisms and a clear understanding of youth work principles. This can be initially daunting for smaller organisations but the benefits are important in establishing and valuing their contribution to work with young people and the wider community.

RECOMMENDATIONS

26 The Area Committee is asked to:

- a) Note the information provided on current services/activities for young people delivered and/or commissioned by youth services across the Inner South area.
- b) Note the April 2009 to January 2010 performance against corporately agreed outcomes/targets for 2009/10.
- c) Note how ward-based resources are being allocated by youth services to support youth work and commissioned activity in 2009/10.
- d) Note the work being undertaken by youth services to support local organisations in building their capacity and ability to deliver activities for young people, in particular the importance of ensuring that proper policies and checks are in place for financial management, safeguarding and child protection.
- e) Agree to the proposed approach to how future services for young people across Inner South area can be developed and coordinated to meet priorities identified in the CYYP and Area Delivery Plan, including potential joint commissioning with Area Committee.
- f) Note that the Youth Service is in discussion with area management team to ensure there is improved coordination of the holiday programmes and proposals to be developed in the future. In addition, a review of current mobile provision delivered by St Lukes will be undertaken and presented in a report to the June 2010 meeting.

Background Papers

Para 3: The Future of Youth Services in Leeds – Report to Executive Board – 13th June 2007

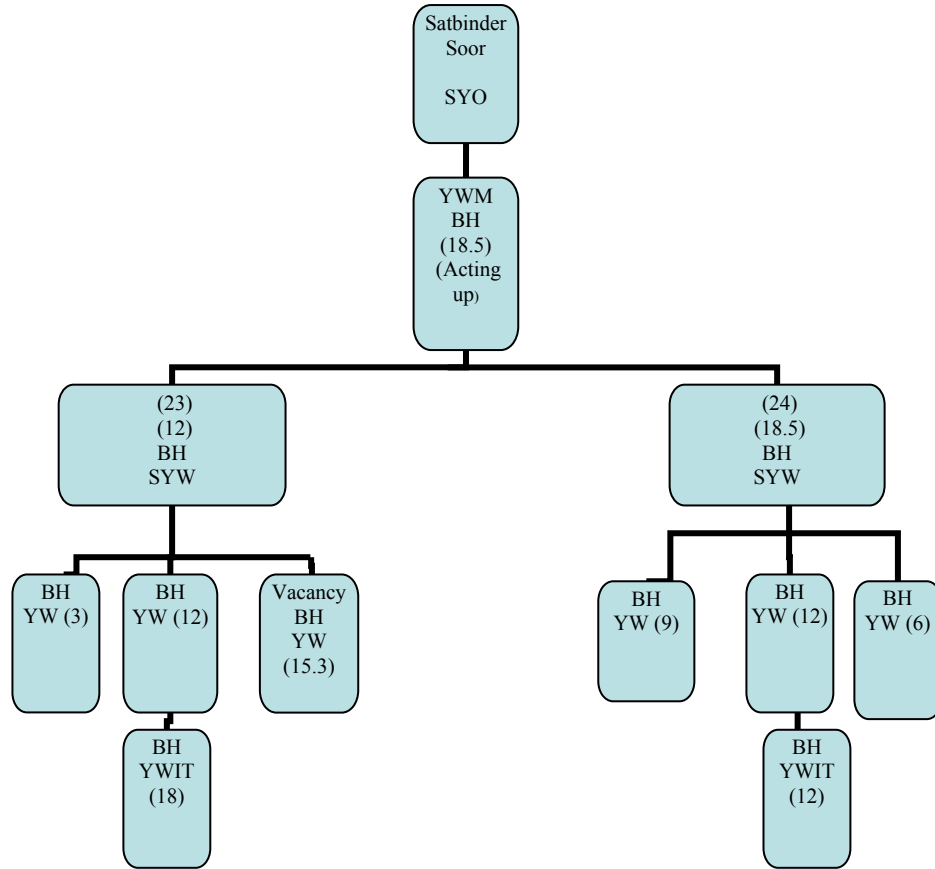
Appendix A

Inner South Youth Service Budget and Team Structure

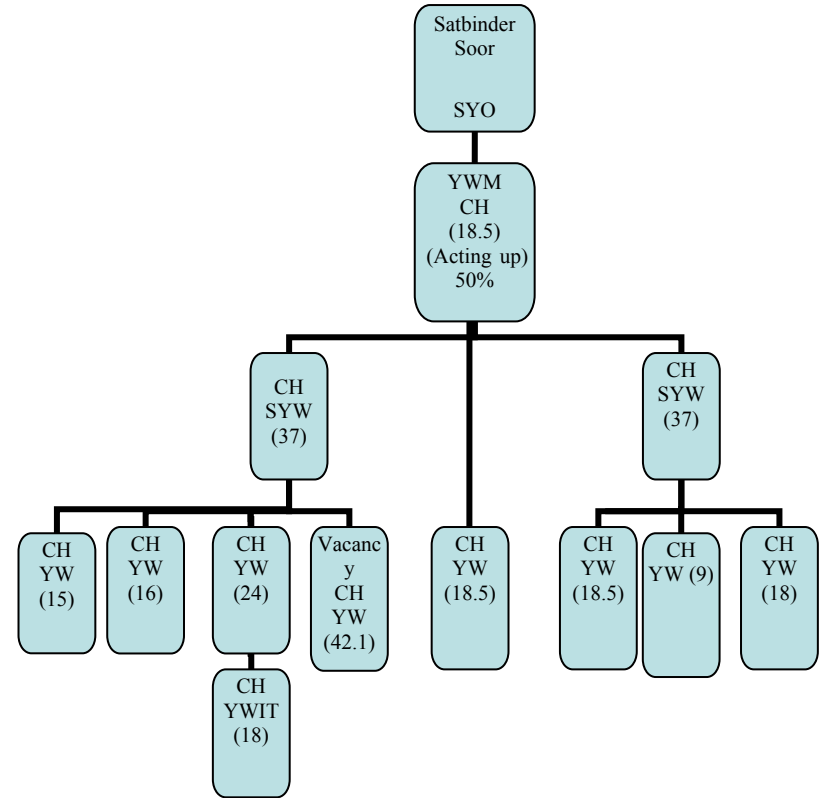
2009/10 Inner South Youth Service Budget		2009/10 Staffing		
Ward	Total (£)	Filled	Vacancy	Total
Middleton Park	£241,506	£213,416	£28,063	£241,479
Beeston & Holbeck*	£155,689	£143,718	£11,887	£155,605
City & Hunslet**	£198,825	£158,858	£39,889	£198,747
Total	£596,020	£515,992	£79,839	£595,831

Notes: *excludes Terence Holness 18.5 additional YW hours (£17,419)
** includes 37 hrs SYW Vacancy (Denise Kempton acting up to YWM)
excludes Josh Macdonald 37 hours Project Manager Salaries (£31,613)

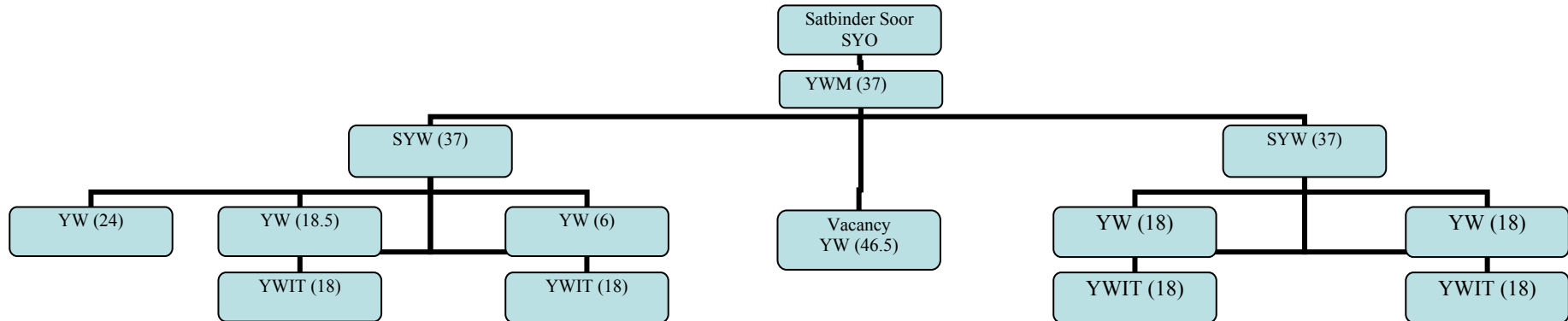
Beeston & Holbeck Ward



City & Hunslet Ward



Middleton Ward



Appendix B

INNER SOUTH YOUTH SERVICE PERFORMANCE (Covering the period April 2009 - Jan 2010)

Ward	Reached		Participation		Recorded outcomes		Accreditations	
	Target to end of Qtr4	Input to Jan	Target to end of Qtr4	Input to Jan	Target to end of Qtr4	Input to Jan	Target to end of Qtr4	Input to Jan
Middleton	1078	1179	647	1021	388	119	170	4
Beeston & Holbeck	674	870	404	696	243	108	106	0
City & Hunslet	813	1280	488	1086	293	181	128	58
Total	2565	3329	1539	2803	924	408	404	62

Key:

Target is the agreed minimum number of young people by the end of quarter 4 2009/10 that the service should be aiming to record in that category.

Input is the number of people actually recorded by January 2010 in that category.

Reach is the number of different young people worked with during the year (25% of population of young people).

Participation is where a young person is assessed by the Youth Worker to have participated in a youth work session rather than just attended).

A **Recorded Outcome** is where a young person has shown progression as a result of youth work.

Accreditation is where a young person completes an activity that results accredited learning.

Appendix C (Ward programmes)

Middleton Park Ward Programmes January 2010

REF	UNIT OF WORK / PROJECT	Address	AGE	SESSIONS DAYS & TIMES		Staffing
MP1	The Best House Supporting the Belle Isle school cluster alternative curriculum programme, by providing small group work sessions	South Leeds High School, Old Run Road Leeds LS10 2JU	11 - 15	Mon	1 - 2pm	Diane Whiteley
MP2	Windmill group Young people meet, socialise, and participate in challenging activities while having fun in a safe environment.	mobile	11 - 19	Monday	4.30 - 6.30pm	Diane Whiteley
MP3	Cinderpath Youth Club Young people meet, socialise, and participate in challenging activities while having fun in a safe environment.	William Gascoigne Youth Centre, Acre Road, Leeds LS10 4DE	13 - 19	Monday	7.00 - 9.00pm	Jim Stanton
MP4/ 5	Mobile/Outreach Young people meet, socialise, and participate in challenging activities while having fun in a safe environment.	Targeted areas of Belle Isle, West grange Club and Belle Isle Library	11-19	Monday	7.00 - 9.00pm	Diane Whiteley
New	Urban arts group	hub	13-19	Monday	7.00 - 9.00pm	Diane Whiteley
MP34 (BH50)	<u>SLA SEXUAL HEALTH CLASS SESSION</u> To engage with young people in the classroom environment to promote healthy lifestyles around sexual health and reduce teenage conceptions.	South Leeds Academy	13-19	Tuesday	11.30-12.30	Alison Dixon
MP6	Mobile Unit Young people meet, socialise, and participate in challenging activities while having fun in a safe environment.	South Leeds High School, Old Run Road Leeds LS10 2JU	11+	Tuesday	12.30 - 2.00pm	Diane Whiteley
MP35	<u>SLA SEXUAL HEALTH CLASS SESSION</u>	South Leeds Academy	13-19	Tuesday	14.00-15.00	Alison Dixon

(BH51)	To engage with young people in the classroom environment to promote healthy lifestyles around sexual health and reduce teenage conceptions.					
MP33	Inters Hub Centre based provision for YP to socialise and participate in fun activities.	The Hub	11-13	Tuesday	4.30 - 6.30pm	Diane Whiteley
MP9	Middleton Detached/Outreach Making contact with young people who cannot, or who choose not to access existing provision, focusing work around the Middleton Area.	Targeted areas of Middleton Westwoods	11 - 19	Tuesday	4.30 – 6.30pm	Jim Stanton
MP10	Gaming group Xbox 360 Gaming Development Group	HUB	13-19	Tuesday	7 – 9.00 pm	Diane Whiteley
MP11	Westwoods Youth Group Young people meet and participate in a range of activities, particular focus is sport and healthy relationships	Westwood Primary School Bodmin Garth Middleton Leeds LS10 4NU	13 - 19	Tuesday	7.00 – 9.00pm	Jim Stanton
MP12	Outreach Westwoods Making contact with YP on the estate who are not engaging and promote the Westwoods youth group.	Westwoods area	13-19	Tuesday	7.00 – 9.00pm	Jim Stanton
MP13	Mobile Unit Young people meet, socialise, and participate in challenging activities while having fun in a safe environment.	South Leeds High School, Old Run Road Leeds LS10 2JU	11+	Weds	12.30 – 2.00pm	Diane Whiteley
MP36 (BH48)	SLA MOBILE To engage with young people who are at the school but live in the political ward to promote our services and encourage them to attend after school activities. To also try and support the cohesion agenda in a neutral setting to encourage the young people from different cultures to mix.	South Leeds Academy	11-19	Weds	12.45 – 13.45	Alison Dixon

MP14	Baby Reality Six week programme to try and discourage young females from becoming pregnant.	South Leeds High School Old Run Road Leeds LS10 2JU	13+	Wed	2 – 4pm	Diane Whiteley
MP7	NEET Drop-in Careers advice and job search for young people seeking information with further education or Employment	hub	15 - 19	Wed	4.30-6.30	Diane Whiteley
MP16	Belle Isle Revisit Working with a targeted group of YP around behaviour change and anti-social behaviour.	Brooms	13-19	Weds	7.00 – 9.00pm	Diane Whiteley
MP17	Go Karting Group Project working with young people who are building and learning how to maintain go karts	HUB	13-19	Weds	7.00 – 9.00pm	Diane Whiteley
MP18	Westwoods Seniors / Outreach Young people meet and participate in a range of activities, particular focus is sport and healthy relationships	Westwoods	13+	Weds	7 – 9pm	Jim Stanton
MP19	Mobile Unit Young people meet and participate in a range of activities; particular focus is sport and healthy relationships.	South Leeds High School, Old Run Road Leeds LS10 2JU	11+	Thurs	12.30 – 2.00pm	Diane Whiteley
MP37 (BH42)	SLA MOBILE To engage with young people who are at the school but live in the political ward to promote our services and encourage them to attend after school activities. To also try and support the cohesion agenda in a neutral setting to encourage the young people from different cultures to mix.	South Leeds Academy	11-19	Thursday	12.45 – 13.45	Alison Dixon
MP20	The Best House Supporting the Belle Isle school cluster alternative curriculum programme, by providing small group work sessions	South Leeds High School, Old Run Road Leeds LS10 2JU	11 - 15	Thurs	1 – 2pm	Giselle Morgan

MP21	Middleton Detached Making contact with young people who cannot, or choose not to access existing provision, focusing on the Middleton area.	Middleton Area Cinderpath area	11 - 19	Thursday	4.30 – 6.30pm	Jim Stanton
MP22	Cinderpath Project Night/Outreach Making contact with young people who cannot, or choose not to access existing provision, focusing on the Middleton area.	Middleton Area, Cinderpath	11 - 19	Thursday	7 – 9pm	Jim Stanton
MP23	Belle Isle Detached Project Making contact with young people who cannot, or choose not to access existing provision. Work is focused around the Manor Farm Estate	Manor Farms and Aberfields	13 - 19	Thursday	7 – 9pm	Diane Whiteley
MP24	The Best House Supporting the Belle Isle school cluster alternative curriculum programme, by providing small group work sessions	South Leeds High School, Old Run Road Leeds LS10 2JU	11 - 15	Fri	1 – 2pm	Giselle Morgan
MP25	Belle Isle Detached Making contact with young people who cannot, or choose not to access existing provision, focusing on the Belle Isle area.	Brooms	11+	Friday	4.30 – 6.30pm	Diane Whiteley
MP26	Belle Isle Detached Making contact with young people who cannot, or choose not to access existing provision, focusing on the Belle Isle area.	Cranmoores	11+	Friday	4.30 – 6.30pm	Diane Whiteley
MP27	Participation Group Working with a group of YP to organise	The Hub	13+	Friday	4.30 – 6.30pm	Diane Whiteley

	the Hub.					
MP28	Middleton Detached Making contact with young people who cannot, or choose not to access existing provision, focusing on the Middleton area.	Middleton Area	11 - 19	Fri	4.30 – 6.30pm	Jim Stanton
MP29	Hub Seniors / Outreach Young people meet and participate in a range of activities, particular focus is sport and healthy relationships	Hub and surrounding area	13+	Friday	7 – 9pm	Diane Whiteley
MP30	Belle Isle Detached/outreach Making contact with young people who cannot, or choose not to access existing provision, focusing on the Belle Isle area.	Brooms Around Dispersal	13+	Friday	7 – 9pm	Diane Whiteley
MP31	Friday Night Project Young people meet and participate in a range of activities practical and sporting activities and healthy relationships	Middleton Leisure Centre Middleton Ring Road Leeds LS10 4AX	11 - 19	Friday	7.00 – 9.00pm	Diane Whiteley
MP32	Middleton Detached Making contact with young people who cannot, or choose not to access existing provision, focusing on the Middleton area.	Targeted areas of Middleton	13+	Friday	7 – 9pm	Jim Stanton

Beeston & Holbeck Programmes January 2010

QI REF	UNIT OF WORK / PROJECT	TAKING PLACE AT: Full Address	AGE GROUP	SESSIONS HELD		PERSON RESPONSIBLE SENIOR WORKER
				DAYS	TIMES	
BH30	<u>MOBILE PROVISION</u> Young people meet, socialise, and participate in challenging activities while having fun in a safe environment.	Playing Fields Brown Lane East	11 to 19	Monday	16.30 - 18.30	Maggie Yule
BH50	<u>COCKBURN HIGH SCHOOL</u> To engage with young people in the classroom environment to promote healthy lifestyles around sexual health and reduce teenage conceptions.	Cockburn High School (Start date waiting partner organisations)	13-19	Tuesday	11.30-12.30	Maggie Yule
BH51	<u>COCKBURN HIGH SCHOOL</u> To engage with young people in the classroom environment to promote healthy lifestyles around sexual health and reduce teenage conceptions.	Cockburn High School (Start date waiting partner organisations)	13-19	Tuesday	14.00-15.00	Maggie Yule
BH47	<u>BEESTON DETACHED</u> To try and engage with young people in positive activities that are not known to the service or will not use centre based provision. Around dispersal zone.	Mafekins Athas	13-19	Tuesday	16.30 – 18.30	Maggie Yule
BH49	<u>DETACHED</u> Engaging with young people who are involved or at the risk of being involved in anti-social behaviour and crime and trying to divert them into positive activities.	Area around Cottingley, Leeds LS11 0HJ	11-19	Tuesday	16.30 – 18.30	Kim Poole
BH52	<u>DETACHED</u> Engaging with young people who are involved or at the risk of being involved in anti-social behaviour and crime and trying to divert them into positive activities.	Old Lane	11-19	Tuesday	19.00- 21.00	Kim Poole

BH25	<u>MOBILE PROVISION revisit</u> Young people meet, socialise, and participate in challenging activities while having fun in a safe environment.	Area around Cottingley, Leeds LS11 0HJ	13-19	Tuesday	19.00 - 21.00	Denise Kempton
BH48	<u>Beeston Village</u> To engage with young people and encourage participation in setting up a youth club at Beeston Village Community Centre.	Beeston Village Community Centre. (Start date waiting partner organisations)	11-19	Wednesday	19:00 – 21:00	Kim Poole
BH42	<u>Holbeck Youth Centre</u> To engage with young people and use the centre based provision at Holbeck Youth Centre for positive activities.	Holbeck Youth Centre (Start date waiting partner organisations)	11-19	Wednesday	16:30 – 18:30	Terence Holness
BH43	<u>DETACHED WOODVIEWS</u> To try and engage with young people in positive activities that are not known to the service or will not use centre based provision.	Area around Beeston Road, Leeds, LS11 6AW	11-19	Thursday	16.30 – 18.30	Terence Holness
BH31	<u>MOBILE PROVISION</u> Young people meet, socialise, and participate in challenging activities while having fun in a safe environment.	On Kings Field within the dispersal zone LS11 7DG	13-19	Thursday	16.30 – 18.30	Denise Kempton
BH12	<u>DETACHED</u> To try and engage with young people in positive activities that are not known to the service or will not use centre based provision.	Area around Old Lane, Athas and Mafekins Leeds	13-19	Thursday	19.00 – 21.00	Kim Poole
BH11	<u>HOLBECK DANCE GROUP</u> Young people working towards a nationalised accreditation mixing with YP from other areas.	The Hub	13-19	Thursday	19.00 – 21.00	Denise Kempton
BH29	<u>DETACHED</u> Young people meet, socialise, and participate in challenging activities while having fun in a safe environment. Areas around dispersal zone.	Cross Flatts Park, Leeds, LS11 7DG	11-19	Thursday	19.00 – 21.00	Maggie Yule
BH44	<u>DETACHED</u> Young people meet, socialise, and participate in challenging activities while having fun in a safe environment.	Beeston Road and top Cross Flatts	13 -19	Friday	16.30 – 18.30	Kim Poole

BH53	<u>DETACHED</u> Young people meet, socialise, and participate in challenging activities while having fun in a safe environment.	Around South Leighs and Learning Centre	11-19	Friday	16.30-18.30	Denise Kempton
BH46	<u>MOBILE</u> Young people meet, socialise, and participate in challenging activities while having fun in a safe environment.	Cross Flatts Park, Leeds, LS11 7DG	13-19	Friday	19.00 – 21.00	Maggie Yule
BH54	<u>DETACHED</u> Young people meet, socialise, and participate in challenging activities while having fun in a safe environment.	Holbeck	11-19	Friday	19.00-21.00	Kim Poole
BH55	<u>Holbeck Youth Centre</u> To engage with young people and use the centre based provision at Holbeck Youth Centre for positive activities.	Holbeck Youth Centre (Start date waiting partner organisations)	11-19	Friday	19:00 – 21:00	Terence Holness

City & Hunslet Programmes January 2010

QI REF	UNIT OF WORK / PROJECT	TAKING PLACE AT: Full Address	AGE GROUP	SESSIONS HELD DAYS & TIMES		PERSON RESPONSIBLE SENIOR WORKER
CH1	<u>MOBILE PROVISION</u> Young people meet, socialise, and participate in challenging activities while having fun in a safe environment.	Area around Grove Road, Leeds, LS10 1JQ	13 -19	Monday	19.00-21.00	Maggie Yule
CH40	<u>SLA SCHOOL MOBILE</u> To engage with young people to promote our services and encourage them to attend after school activities. To also try and support the cohesion agenda in a neutral setting to encourage the young people from different cultures to mix.	South Leeds Academy	11-19	Tuesday	12.30 – 14.00	Kim Poole
CH 51	<u>SLA SEXUAL HEALTH CLASS SESSION</u> To engage with young people in the classroom environment to promote healthy lifestyles around sexual health and reduce teenage conceptions	South Leeds Academy	13-16	Tuesday	10.30-11.30	Maggie Yule
CH3	<u>HYP CLINIC</u> Offering sexual health services to YP in partnership with school nurses and other health providers.	South Leeds High School	13-19	Tuesday	14.00 – 16.00	Denise Kempton
CH8	<u>MOBILE</u> 6 weeks motorbike course at Laser Centre as part of a Revisit programme.	Disraeli Terrace	13-19	Tuesday	16.30 - 19.30	Kim Poole
CH2	<u>OLD COCKBURN SENIORS</u> Young people meet, socialise, and participate in challenging activities while having fun in a safe environment.	Old Cockburn Sports Hall, Primrose Lane, Leeds LS11 5EW	13-19	Tuesday	19.00 – 21.00	Shelia Khatun

CH37	<u>OLD COCKBURN EARLY</u> Working with Refugee asylum seeker young people and trying to integrate into mainstream provision.	Old Cockburn Sports Hall, Primrose Lane, Leeds LS11 5EW	13-19	Wednesday	16.30 – 19.30	Kim Poole
CH18	<u>CONNEXIONS DROP- IN</u> To work with Young people who are in need of support looking for employment ,training or other specialist help such as health, housing etc.	Old Cockburn Sports Hall, Primrose Lane, Leeds LS11 5EW	16-19	Wednesday	16.30 - 18.30	Seriah Powell
CH6	<u>HUNSLET CARR YOUTH CLUB</u> Young people meet, socialise, and participate in challenging activities while having fun in a safe environment.	Hunslet Carr School Community Room	13-19	Wednesday	18.30 - 20.30	Shelia Khatun
CH20	<u>MOBILE PROVISION/OUTREACH</u> Young people meet, socialise, and participate in challenging activities while having fun in a safe environment.	Pepper Road Park, nr Belle Isle Centre LS10 2RU	11-19	Wednesday	19.00 – 21.00	Denise Kempton
CH7	<u>OLD COCKBURN SENIORS</u> Young people meet, socialise, and participate in challenging activities while having fun in a safe environment.	Old Cockburn Sports Hall, Primrose Lane, Leeds LS11 5EW	13-19	Wednesday	1900 – 21.00	Denise Kempton
CH48	<u>DETACHED</u> To try and engage with young people in positive activities who are not known to the service or will not use centre based provision	Beeston Hill	11-19	Thursday	16.30 – 18.30	Tee Holness
CH19	<u>MOBILE PROVISION</u> Young people meet, socialise, and participate in challenging activities while having fun in a safe environment.	Area around Arthingtons, Leeds LS11 6DP	13-19	Friday	16.30 - 18.30	Denise Kempton
CH46	<u>GIRLS GROUP</u> To meet young females and socialise and participate in activities dealing with issues that affect young females.	Old Cockburn Sports Hall, Primrose Lane, Leeds LS11 5EW	13-19	Friday	16.30 – 18.30	Shelia Khatun

CH14	<u>FRIDAY NIGHT PROJECT</u> A partnership project targeted at young people participating in activities on a Friday night linked to Health and sport	South Leeds Sports Centre, Leeds LS11 6TP	13-19	Friday	19.00 – 21.00	David Gordon
CH47	<u>OLD COCKBURN SENIORS</u> Afghanistan refugee young people meet, socialise, and participate in challenging activities while having fun in a safe environment.	Old Cockburn Sports Hall, Primrose Lane, Leeds LS11 5EW	13-19	Friday	19.00 – 21.00	Shelia Khatun
CH 52	<u>THE WORKS</u> Working in partnership with the skating provider to encourage YP to learn to skate and bike in a safe environment.	The works skate park	11-19	Friday	19.00 – 21.00	Denise Kempton